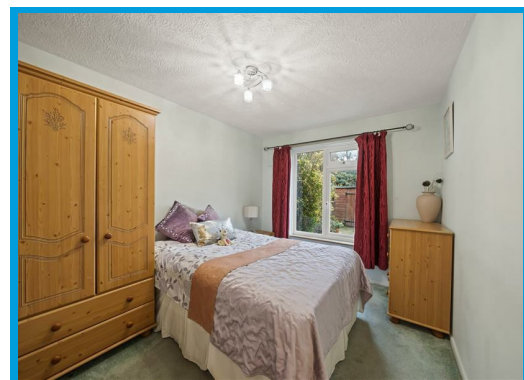




Queens Road, Guildford, GU1 4JJ

Guide Price £232,500

A bright one-bedroom maisonette in Guildford town centre with a private garden and allocated parking. Well presented throughout with a modern kitchen and bathroom, spacious living area, and large bedroom. Within walking distance of the station and amenities, offered with no onward chain—ideal for first-time buyers or investors.



# Description

Offered to the market with no onward chain, this bright and airy one-bedroom maisonette is ideally positioned in the heart of Guildford town centre, within easy walking distance of the mainline train station and a wide range of shops, restaurants, and amenities.

The property features a spacious living area, filled with natural light and providing a comfortable space for both relaxing and entertaining. The modern fitted kitchen and contemporary bathroom are well presented, while the generously sized double bedroom offers ample room for storage and furnishings.

Externally, the maisonette benefits from a private garden, an increasingly rare feature for a town-centre property, along with allocated parking, adding further convenience and appeal.

This property represents an excellent investment opportunity or an ideal first-time purchase, combining a central location with desirable features and strong rental potential.

